

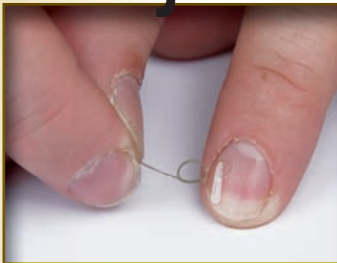
CE HOW TO MAKE

This is a modern take on one of the oldest rigs in the book, the link leger. Ideal for the roving angler, who needs to constantly adjust the weight of the lead to combat the different conditions found when tackling different swims.



You will need:
 • Korum Quickstops • Size 14 Korum S3 hooks
 • 4-8lb Korum reel line • Korum large adjustable line stops
 • Preston Innovations SSG shot

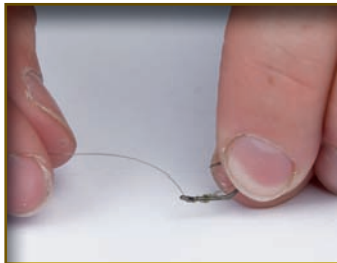
Adjustable LINK LEGER



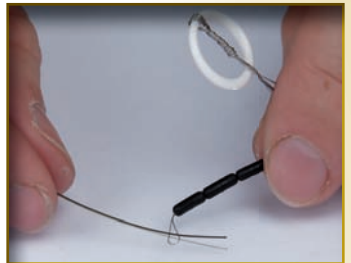
1. Cut off a 60cm length of the Korum reel line to act as your hook length and tie on a Quickstop.



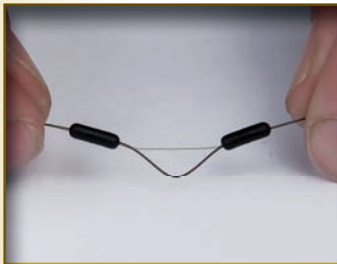
2. Thread on an S3 hook and adjust the hair length to the required distance.



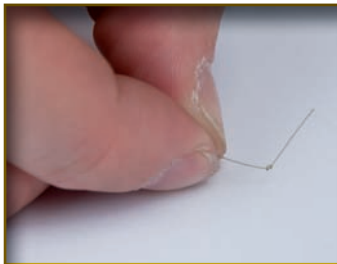
3. Tie the hook using an eight turn knotless knot. Make sure the line exits through the front of the eye.



4. Hold your main line and a 20cm length of 4lb line together. Thread over both two large adjustable stops.



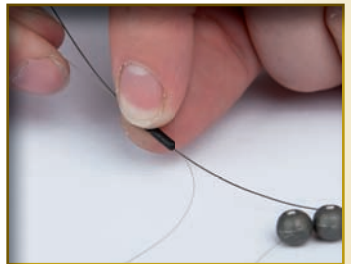
5. You have now trapped the short length of line on the main line, allowing the position to be adjusted.



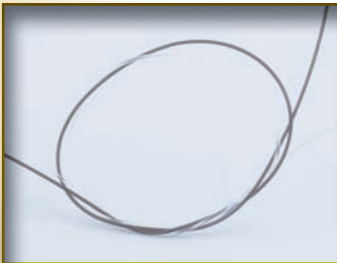
6. Tie an overhand knot in the end of the 4lb line (this is the link).



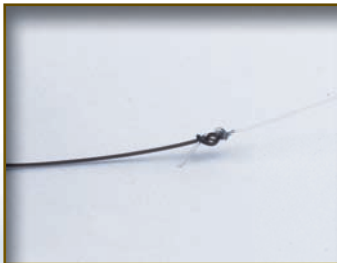
7. Add the required number of shot to the link. The last shot rests against the knot.



8. Adjust the length and position of the link by moving the stops and length of the link.



9. Tie on the hook length using a two or three turn water knot. This is very strong and neat.



10. Make sure you wet the knot when pulling it up tight, trim off the tag ends.



11. The finished rig allows the weight and the hook-length and link to be adjusted independently.



The Finished Rig